

2018 Georgia Grazing School: Data Review: Animal Performance on Summer Annual Forages

Robert McKee
PhD Student - UGA

Data Review: Warm-Season Annual Forages

Robert McKee
Department of Animal and Dairy Science
University of Georgia

Warm-Season Annual Forage Options

- Sorghum
- Sorghum-Sudangrass
- Sudangrass
- Browntop Millet
- Pearl Millet
- Crabgrass
- Cowpeas
- Others

Pearl Millet

- Dry Matter Yields
- Drought Tolerance
- No Sugarcane Aphid
- Regrowth Potential
 - Defoliation
 - Silage/Haylage/Baleage
- Digestibility

Grazing Study

- 3-Year Beef-Cattle Finishing
- 2 Varieties of Pearl Millet
 - 'Tifleaf 3'
 - 'Exceed' Brown Mid-Rib (BMR)
- Soybean Hull Supplementation
 - 0.75% of BW
- ~1000 lb Steers
- ~90 day grazing period

Pasture Establishment and Management

- Planted in early April at 15 lbs/acre
- 2 applications of N Fertilizer
 - 50 and 30 lbs/acre
- Rotationally Grazed
- Variable Stocking Rate
 - "Put-and-Take" steers and heifers
- 8 'extra' acres for baleage

When to Start (and stop) Grazing?

Start Grazing:

- 30-40 days after planting
- 20-24" plant height
- Watch for seed heads and flag leaves

Stop Grazing:

- 6-8" plant height
 - Regrowth!
- 10-14 day rotation
 - Intensive grazing
- Drought periods
 - Late season
- Nitrogen Applications



2018 Georgia Grazing School: Data Review: Animal Performance on Summer Annual Forages

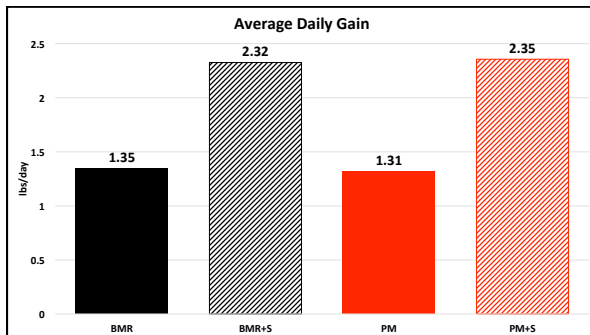
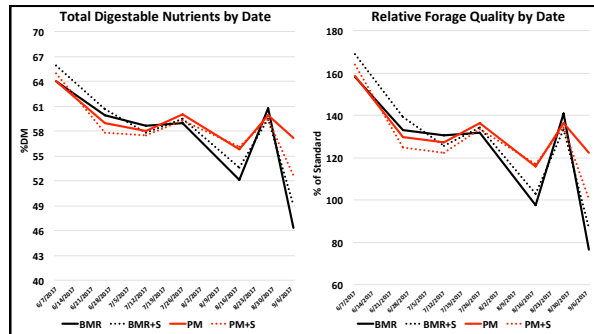
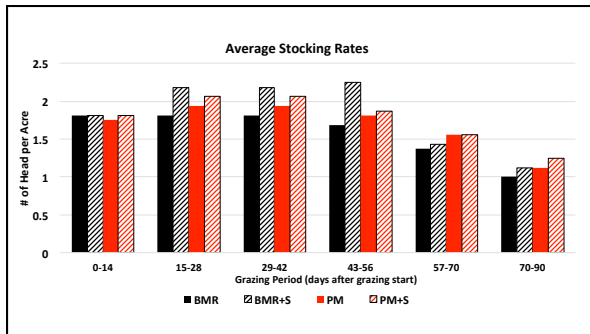
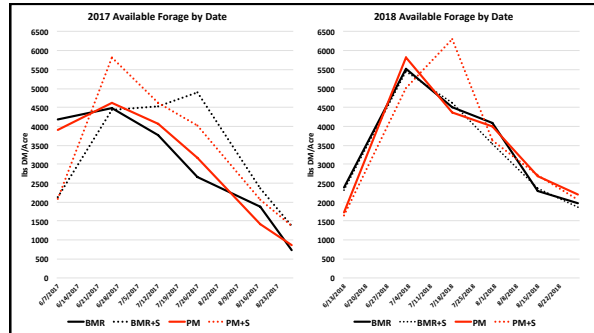
Robert McKee
PhD Student - UGA

Results

- Forage Production
- Stocking Rates
- Forage Quality (2017)
- Animal performance

Treatment Abbreviations:

- BMR = 'Exceed' Brown Mid-Rib
- BMR+S = BMR + Soybean Hulls
- PM = 'Tifleaf 3'
- PM+S = PM + Soybean Hulls



Conclusions and Considerations

- Viable warm-season forage option
 - Planting date crucial
 - ~1.3 lbs/day over ~90 days
- Graze early and intensively
 - Leave 6-8" of stubble
- Be wary of dry spells and seed heads
 - Adjust stocking density
- Timely nitrogen applications
- Plant extra or exclude if possible for baleage

