

# Forage Conference at GCA Convention

## Weather Outlook for the 2017 Growing Season

### Weather and Climate Outlook for the 2017 Growing Season

Pam Knox  
UGA Agricultural Climatologist

### 2016-17 Winter anomalies

Departure from Normal Temperature (°F) 12/1/2016 - 2/28/2017

Departure from Normal Precipitation (in) 12/1/2016 - 2/28/2017

<http://www.hprcc.unl.edu/maps.php?map=ACISClimateMaps>

### Rome: 2016 temperature

Daily Temperature Normals and Extremes for ROME R B RUSSELL AP (GA)  
Midwestern Regional Climate Center

<http://mrcc.isws.illinois.edu/CLIMATE/>  
(sign up for free account and pick Monthly/Thermograph)

### Rome: Winter 2016-17 temperature

Daily Temperature Normals and Extremes for ROME R B RUSSELL AP (GA)  
Midwestern Regional Climate Center

Very few days below normal in temperature; January had a long period with April-like temperatures

### Chill hours this winter

Temperature: + 45°F - Peach County (GA)  
Period: Oct 1, 2016 - Mar 15, 2017

<http://agroclimate.org/tools/Chill-Hours-Calculator/>

### Soil moisture conditions

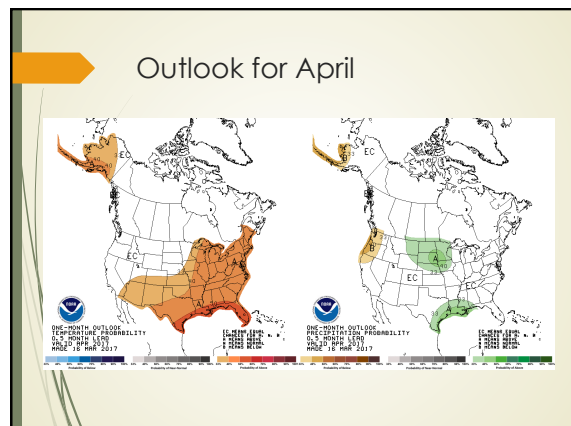
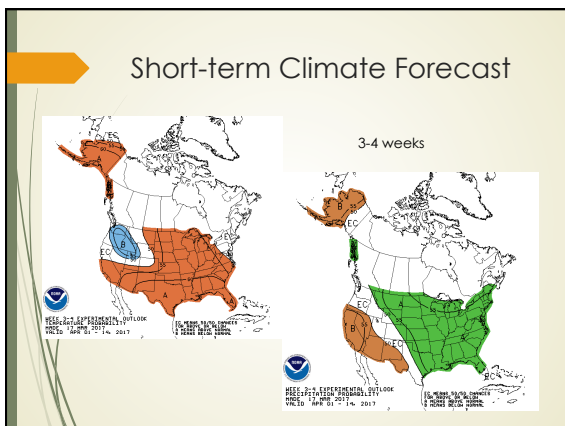
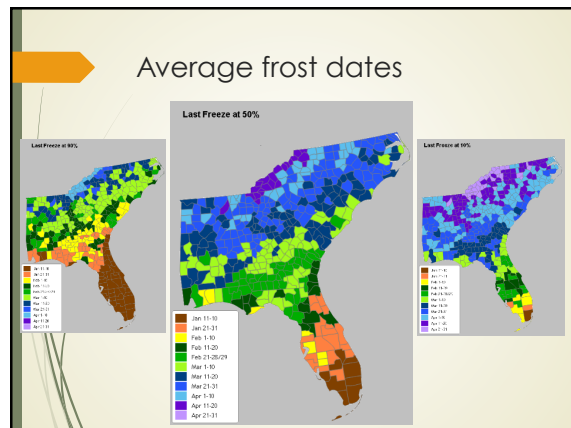
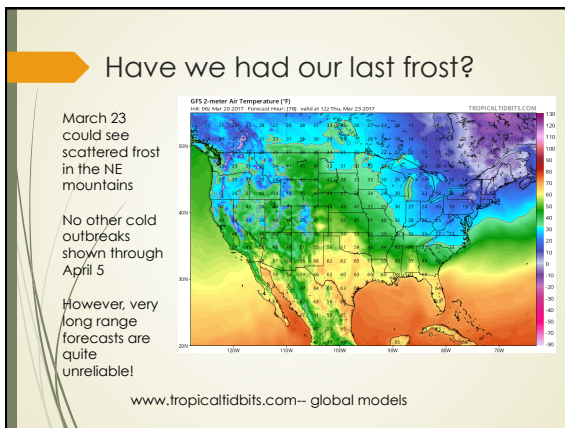
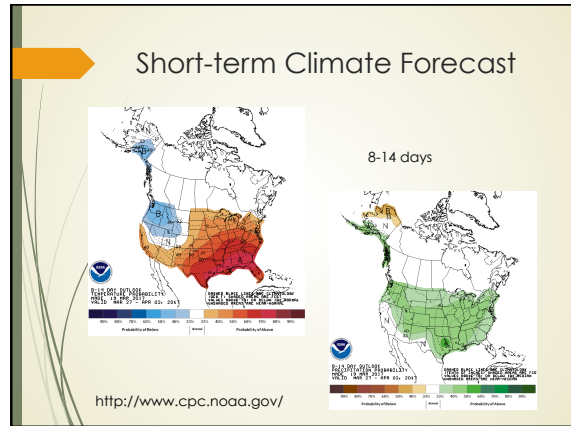
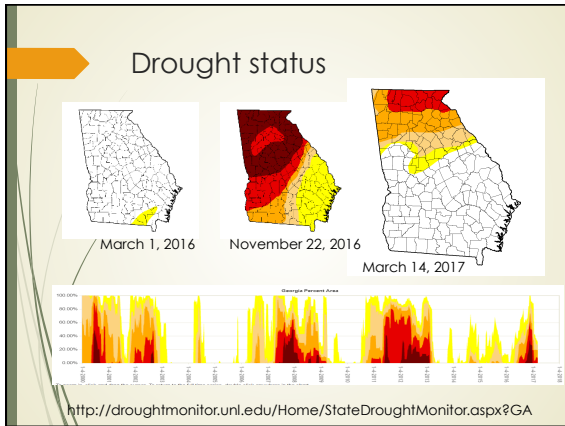
Lawn and Garden Moisture Index for March 20, 2017

[http://nsstc.uah.edu/aosc/lawn\\_garden\\_se.html](http://nsstc.uah.edu/aosc/lawn_garden_se.html)

Dr. Pam Knox,  
Extension Climatologist

# Forage Conference at GCA Convention

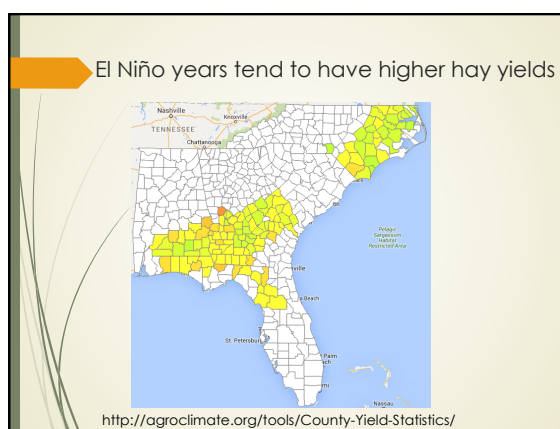
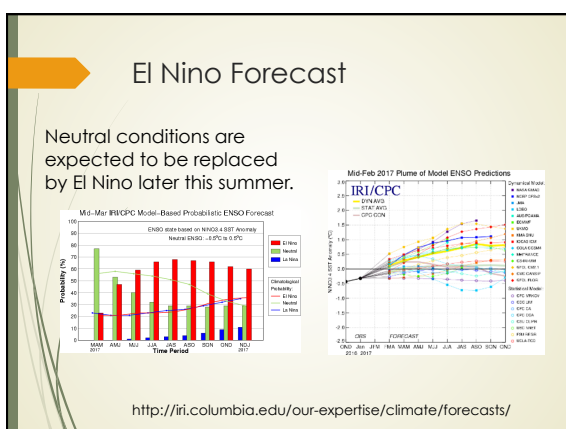
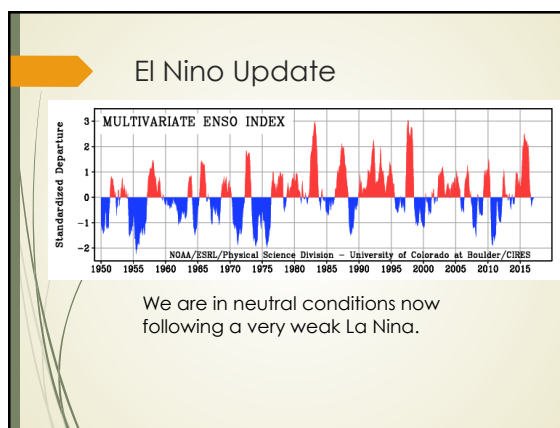
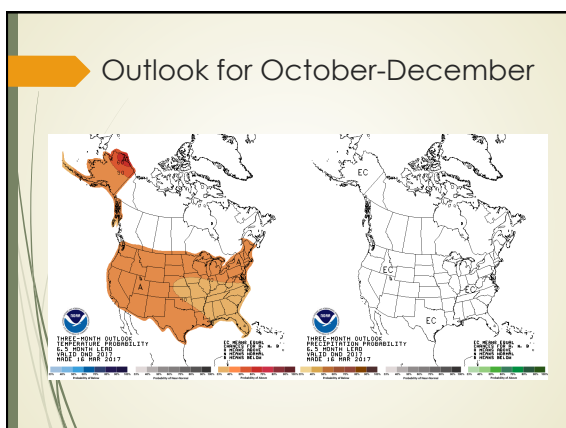
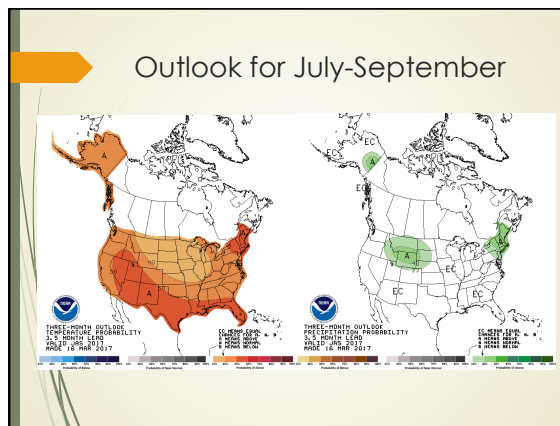
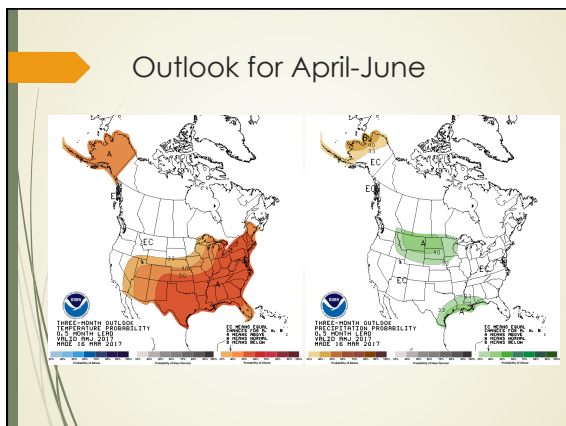
## Weather Outlook for the 2017 Growing Season



Dr. Pam Knox,  
Extension Climatologist

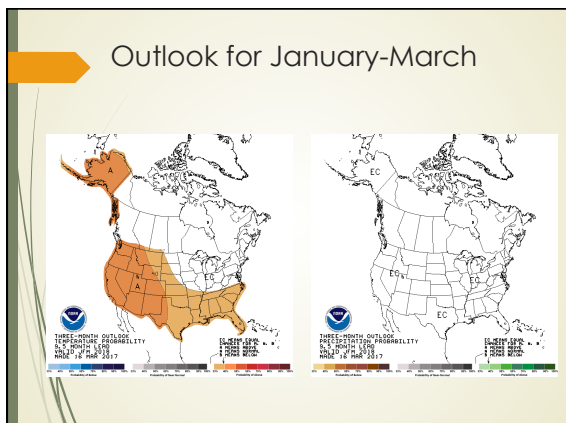
# Forage Conference at GCA Convention

## Weather Outlook for the 2017 Growing Season



# Forage Conference at GCA Convention

## Weather Outlook for the 2017 Growing Season



### What about the tropics?

- Typically there are less Atlantic hurricanes when there is an El Nino and more when there is a La Nina
- The key early in the tropical season is how fast El Nino appears
- There is no useful predictability for what will happen later in the growing season re rainfall this year

### Implications for Hay

- Dry soil conditions should continue through spring in many locations but may improve
- Early spring has increased demand on soil moisture by actively-growing plants
- We should stay in neutral conditions through early summer
- By mid-summer we could see El Nino conditions, which could reduce tropical rain events

### Thank you!

Contact me at:  
Pam Knox  
[pknox@uga.edu](mailto:pknox@uga.edu)  
706-310-3467 office  
706-621-1970 cell

<http://blog.extension.uga.edu/climate>  
<http://gaclimate.org>